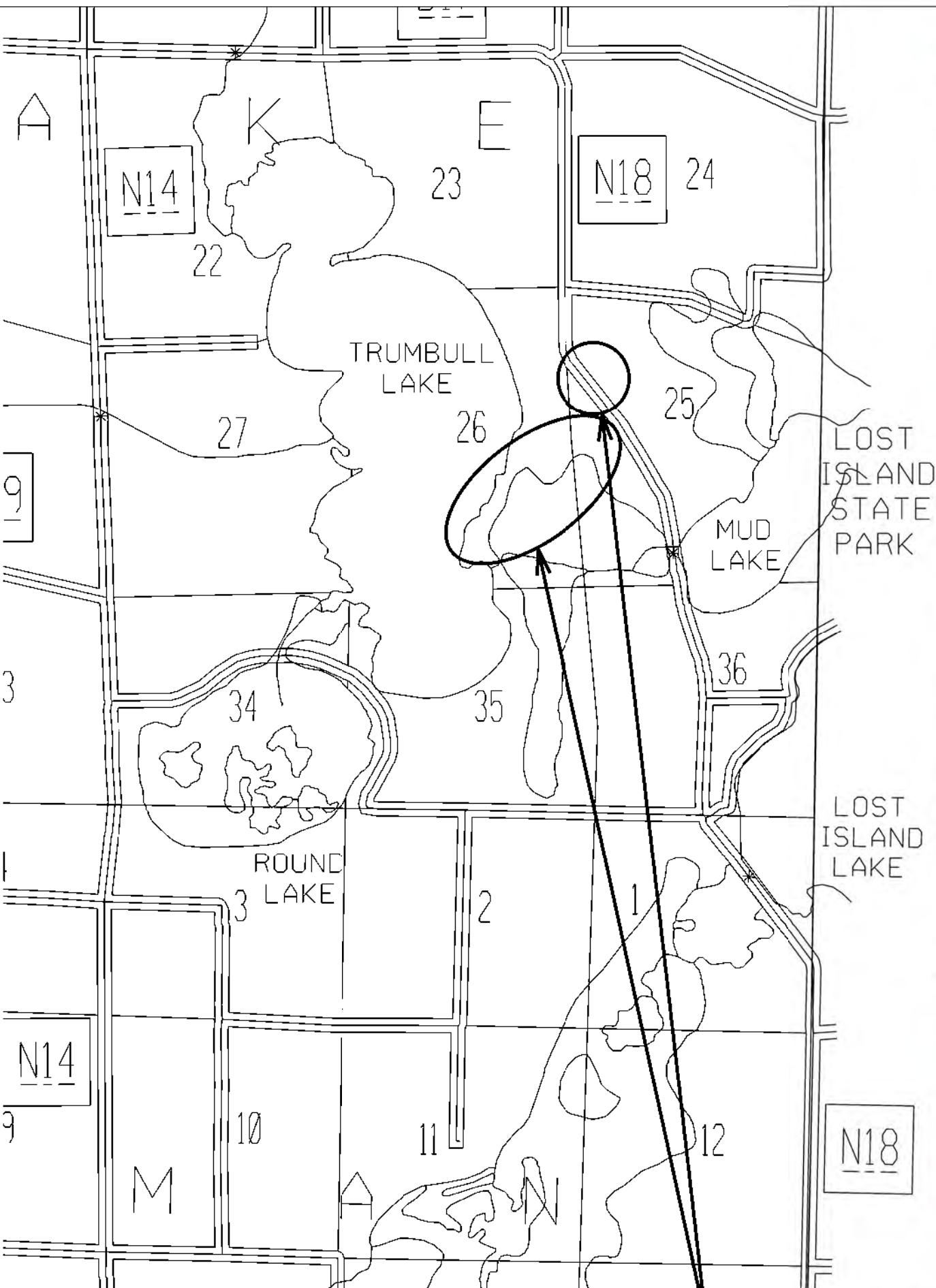


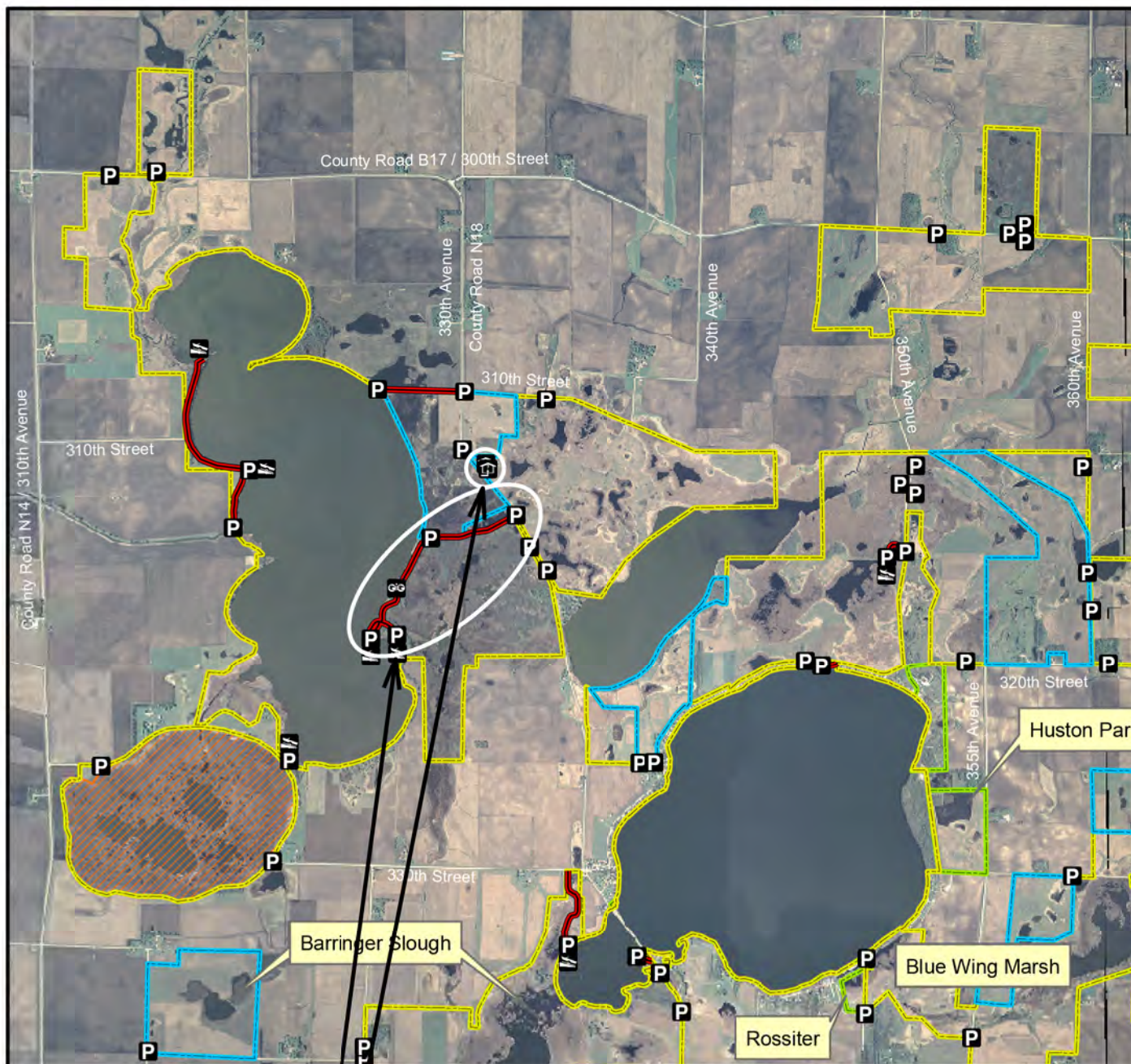




# Dewey's Pasture Wildlife Management Area

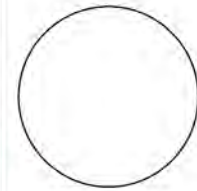


PROJECT LOCATIONS



<b>Legend</b>		<i>Map Creation Date: 8/2011</i>
	State Areas open to hunting	 Acres: 5,522 Habitat: 2/5 Lakes, 2/5 Marsh, 1/5 Upland Species: Deer, Squirrel, Pheasant, Waterfowl, Rabbit, Dove Contact: Bryan Hellyer Prairie Lakes Wildlife Unit 712-330-2563 Restrictions: Non-Toxic Shot Canada Goose Closed Area #2
	WMA Boundary	
	WPA Boundary	
	Refuge	Clay & Palo Alto Counties, Iowa T-96&97N, R-34&35W, Sections 1,3,6,15,17,19-20,22-23,25-36  Directions: 0.5 mile W of Ruthven on Hwy 18, 4 miles N on N18.
	Unit Headquarters	
	Parking Lot	
	Boat Ramp	PROJECT LOCATION MAP ROAD MAINTENANCE FOR: DEWEY'S PASTURE/SMITH SLOUGH CLAY COUNTY
	Scenic Overlook	
	Access Road	REVISION DRAWN BY: BLF CHECKED BY: DATE: AUGUST 2022 SHEET NO:
	Other Public Land	
2007 Aerial Photography		

CONSULTANT:



IOWA DEPARTMENT OF NATURAL RESOURCES  
 ENGINEERING SERVICES - WALLACE BUILDING  
 502 E. 9TH ST., DES MOINES, IA 50319-0034



PROJECT LOCATION MAP

ROAD MAINTENANCE FOR:  
 DEWEY'S PASTURE/SMITH SLOUGH  
 CLAY COUNTY

NO.	DATE	REVISION



ESTIMATED PROJECT QUANTITIES

ITEM NO.	ITEM	UNIT	TOTAL
1	2102 - EXCAVATION, CL 10, RDWY+BORROW	CY	29
2	2115 - MODIFIED SUBBASE	TON	53
3	2306 - ASPH EMULSION-FOG SEAL (PAV'T)	GAL	635
4	2518 - SAFETY CLOSURE	EACH	2
5	2528 - TRAFFIC CONTROL	LS	1
6	2529 - PATCHES, FULL-DEPTH FINISH, BY AREA. 6" HMA	SY	174
7	2529 - PATCHES, FULL-DEPTH FINISH, 6-IN., BY COUNT, HMA	EACH	7
8	2533 - MOBILIZATION	LS	1
9	2541 - CRACK AND JOINT CLEANING AND SEALING (HMA SURFACES)	MILE	1.41
10	2541 - SEALER MATERIAL (HMA SURFACES)	LB	1033
11	2543 - TRANSVERSE JOINT REPAIR	TON	71

ESTIMATE REFERENCE INFORMATION

ITEM NO.	DESCRIPTION
1	A. Overexcavate 6" of existing base/subbase under HMA patches. B. Dispose of spoil offsite.
2	A. Place 6 inches of modified, plus geo-grid, under HMA patches. B. DOT approved source.
3	A. Dilute 2:1 with water. B. Apply at 0.15 GAL/SY. C. DOT approved source.
4	A. Follow Iowa DOT spec 2528 for set up details.
5	A. Full public access required from noon Fridays until Sunday 12 midnight.
6.7	A. Areas will be marked by DNR Field Engineer. B. Dispose of removed material offsite.
9	A. Fill cracks to within 1/4-inch of surface. B. DOT approved source.
10	A. DOT approved source.
11	A. Nominal 2-foot width, 5-inch depth. B. Dispose of millings/material offsite. C. Joints will be marked by DNR Field Engineer.

GENERAL NOTES

Verify actual locations and elevations with DNR Engineer.

All work shall conform to and be performed in accordance with all applicable codes and ordinances.

The contractor shall visit the site and inspect the project area and thoroughly familiarize themselves with the actual job conditions prior to bidding and the start of work. Failure to visit the project site shall not relieve the contractor from performing the work in accordance to the plans, specification, special provisions and contract.

The contractor shall verify, at the site, all dimensions and conditions shown on the plans and shall notify the DNR Engineer of any discrepancies, omissions, and/or conflicts prior to proceeding with the work.

It shall be the contractor's responsibility to provide waste areas or disposal sites for excess material (excavated material or broken concrete) which is not desirable to be incorporated into the work involved on this project. No payment for overhaul will be allowed for material hauled to these sites. No material shall be placed within the right-of-way, unless specifically stated in the plans or approved by the DNR Engineer.

The contractor shall not disturb desirable grass areas and desirable trees outside the construction limits. The contractor will not be permitted to park or service vehicles and equipment or use these areas for storage of materials. Storage, parking and service areas will be subject to the approval of the DNR Engineer.

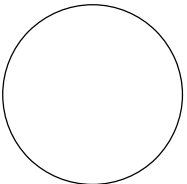
Where utilities and fixtures are shown as Existing on the plans or encountered within the construction area, it shall be the responsibility of the contractor to notify the DNR Engineer of those utilities prior to the beginning of any construction. The contractor shall be afforded access to these facilities for necessary modification of services. Underground facilities, structures and utilities have been plotted from available surveys and records and therefore their locations must be considered approximate only. It is possible there may be others, the existence of which is presently not known or shown. It is the contractor's responsibility to determine their existence and exact location and to avoid damage thereto. No claims for additional compensation will be allowed to the contractor for any interference or delay caused by such work.

The contractor shall shape graded area to maintain surface drainage. All elevations are to finish grade.

The contractor is expected to have materials, equipment, and labor available on a daily basis to install and maintain erosion control features on the project. This may involve seeding, silt fence, rock ditch checks, silt basins or silt dikes.

**NO WORK FROM 12 NOON FRIDAYS, UNTIL THE FOLLOWING MONDAY.**

CONSULTANT:



**IOWA DEPARTMENT OF  
NATURAL RESOURCES**

ENGINEERING SERVICES - WALLACE BUILDING  
502 E. 9TH ST., DES MOINES, IA 50319-0034



**QUANTITIES AND GENERAL INFORMATION**

ROAD MAINTENANCE FOR:

**DEWEY'S PASTURE/SMITH SLOUGH**

CLAY COUNTY

NO.	BY DATE	REVISION

DRAWN BY:	PROJECT NUMBER:
BLF	23-01-21-03

CHK'D BY:	DATE:
	AUGUST 2022

SHEET No:

**C.01**



310th Street

PROJECT SITES

TRUMBALL LAKE

330th Ave (N18)

SPOIL LOCATION

MUD LAKE

# PROJECT OVERVIEW

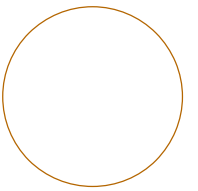
330th Street

320th Street

LOST ISLAND LAKE



CONSULTANT:



IOWA DEPARTMENT OF  
NATURAL RESOURCES

ENGINEERING SERVICES - WALLACE BUILDING  
502 E. 9TH ST., DES MOINES, IA 50319-0034



SITE PLAN

ROAD MAINTENANCE FOR:  
DEWEY'S PASTURE/SMITH SLOUGH

CLAY COUNTY

NO.	DATE	REVISION

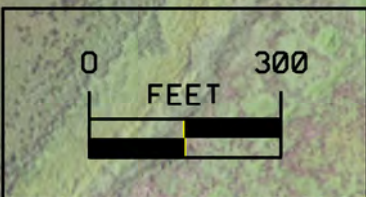
DRAWN BY: PROJECT NUMBER:  
BLF 23-01-21-03

CHK'D BY: DATE:  
AUGUST 2022

SHEET NO:

D.01





EXCAVATION, CL 10, RDWY+BORROW		2113 - SUBGRADE STABIL MAT'L, POLYMER GRID		MODIFIED SUBBASE		SAFETY CLOSURE		PATCHES, FULL-DEPTH FINISH, 6-IN., BY COUNT,	
3+78	3+84	3+78	3+84	3+78	3+84	0+00	43+86	3+78	3+84
0.67 CY		4 SY		1.2 TON		1 EACH		1 EACH	
9+43	9+49	9+43	9+49	9+43	9+49	45+11	46+03	9+43	9+49
0.67 CY		4 SY		1.2 TON		1 EACH		1 EACH	
33+49	33+59	33+49	33+59	33+49	33+59	43+15	43+50	33+49	33+59
1.85 CY		11.1 SY		3.4 TON		4 SY		1 EACH	
43+15	43+50	43+15	43+50	43+15	43+50	43+15	43+50	43+15	43+50
3.24 CY		19.4 SY		5.9 TON		4 SY		1 EACH	
43+86	44+56	43+86	44+56	45+11	46+03	43+86	44+56	43+86	44+56
6.48 CY		38.9 SY		11.8 TON		11.1 SY		1 EACH	
45+11	46+03	45+11	46+03	45+11	46+03	43+15	43+50	45+11	46+03
15.33		92 SY		15.3 TON		19.4 SY		1 EACH	
29 CY TOTAL		174 SY TOTAL		53 TON TOTAL		38.9 SY		1 EACH	
				FOG SEAL		45+11 46+03		43+86 44+56	
				0+00 54+47		92 SY		45+11 46+03	
				487 GAL		174 SY TOTAL		0+00 54+47	
								70 JOINTS	
								67.7 TON	

PATCHES, FULL-DEPTH FINISH, 6-IN., BY COUNT,	
3+78	3+84
1 EACH	
9+43	9+49
1 EACH	
33+49	33+59
1 EACH	
43+15	43+50
1 EACH	
43+86	44+56
1 EACH	

CONSULTANT:



**IOWA DEPARTMENT OF NATURAL RESOURCES**

ENGINEERING SERVICES - WALLACE BUILDING  
502 E. 9TH ST., DES MOINES, IA 50319-0034



**SITE PLAN**

ROAD MAINTENANCE FOR:

DEWEY'S PASTURE/SMITH SLOUGH

CLAY COUNTY

NO. BY DATE REVISION

DRAWN BY: PROJECT NUMBER:

BLF 23-01-21-03

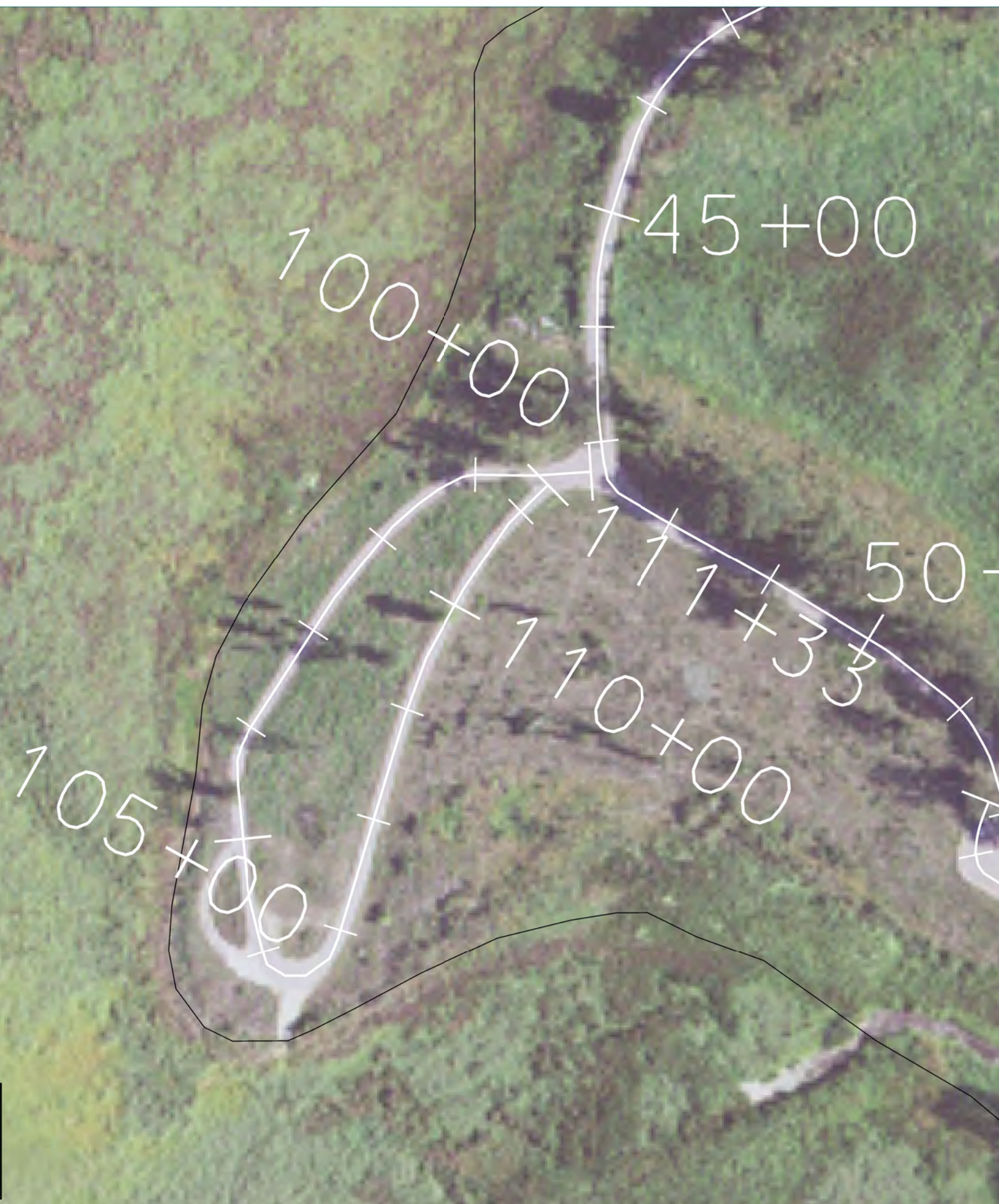
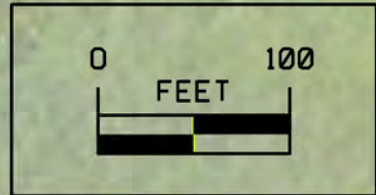
CHKD BY: DATE:

AUGUST 2022

SHEET NO.:

**D.02**





2113 - SUBGRADE STABIL	
MAT'L, POLYMER GRID	
103+99	104+05
4 SY	
EXCAVATION, CL 10,	
RDWY+BORROW	
103+99	104+05
0.67 CY	
MODIFIED SUBBASE	
103+99	104+05
1.2 TON	
FOG SEAL	
100+00	111+33
35 GAL	
PATCHES, FULL-DEPTH	
FINISH, BY AREA. 6"	
103+99	104+05
4 SY	
PATCHES, FULL-DEPTH	
FINISH, 5-IN., BY COUNT,	
103+99	104+05
1 EACH	
CRACK AND JOINT	
CLEANING AND SEALING	
100+00	111+33
0.21 MILE	
SEALER MATERIAL	
(HMA SURFACES)	
100+00	111+33
161 LBS	
TRANSVERSE JOINT	
REPAIR	
100+00	111+33
13 JOINTS	
8.0 TON	

CONSULTANT:



IOWA DEPARTMENT OF  
NATURAL RESOURCES

ENGINEERING SERVICES - WALLACE BUILDING  
502 E. 9TH ST., DES MOINES, IA 50319-0034



SITE PLAN

ROAD MAINTENANCE FOR:

DEWEY'S PASTURE/SMITH SLOUGH

CLAY COUNTY

NO.	BY DATE	REVISION

DRAWN BY: BLF PROJECT NUMBER: 23-01-21-03  
CHKD BY: DATE: AUGUST 2022

SHEET NO: D.03



